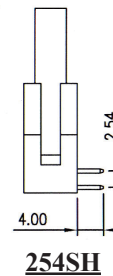
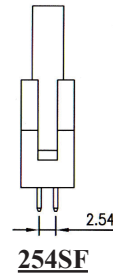
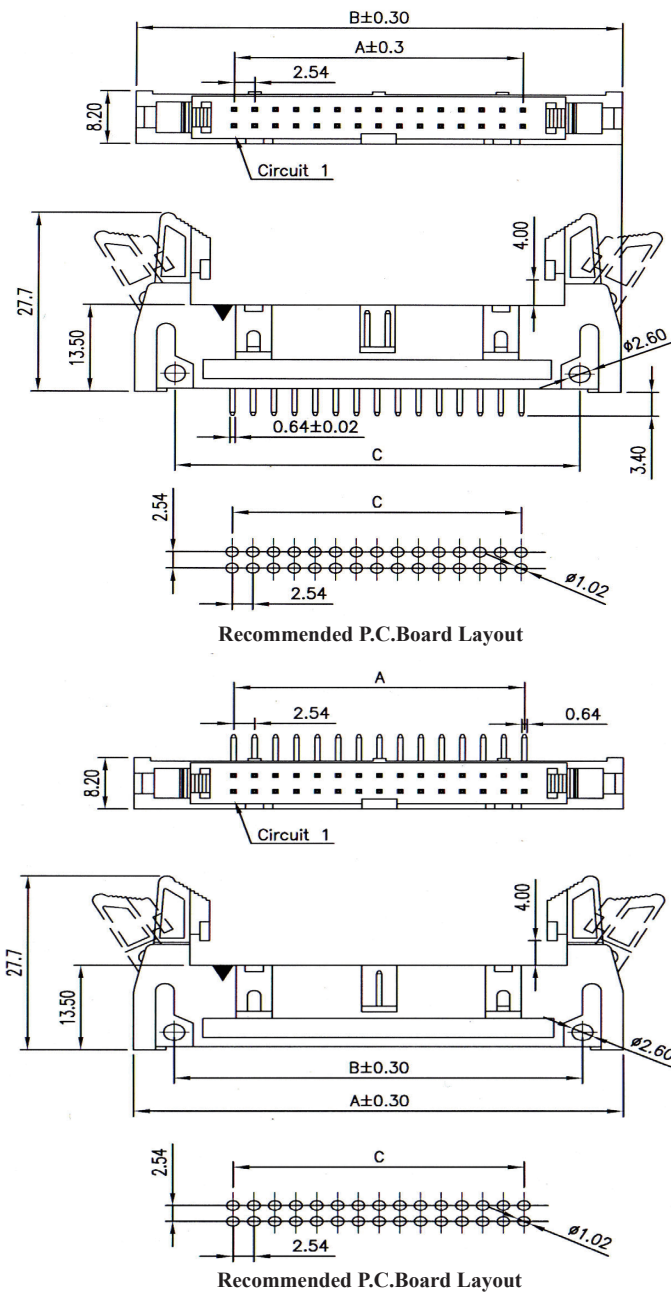


## 2.54MM(0.100") SHROUDED HEADER WITH SHORT LEVERS



### SPECIFICATIONS

**Current Rating:** 3 Amperes  
**Insulation Resistance:** 1000MΩ Min  
**Dielectric Withstanding:** 600V AC/DC  
**Contact Resistance:** 20mΩ Max.  
**Operating Temperature:** -40°C to +105°C

### MATERIALS

**Contact Material:** Copper Alloy  
**Contact Plating:** Gold / Tin over Nickel  
**Insulator:** Glass Filled Polyester (UL 94V-0)  
 P.B.T or Nylon-6T  
**All materials must be RoHS compliant.**

No. of Contacts	Dimensions(mm)		
	A	B	C
10	10.16	32.00	21.84
14	15.24	37.08	26.92
16	17.78	39.62	29.46
20	22.86	44.70	35.54
24	27.94	49.78	39.62
26	30.48	52.32	42.16
30	35.56	57.40	47.24
34	40.64	62.48	52.32
40	48.26	70.10	59.94
50	60.96	82.80	72.64
60	73.66	95.50	85.34
64	78.74	100.58	90.42

### ORDERING INFORMATION:

P/N 254  $\frac{XX}{1}$  -  $\frac{XXX}{2}$   $\frac{XX}{3}$   $\frac{X}{4}$

#### 1. TERMINAL TYPE:

"SF" STRAIGHT TYPE WITH SHORT LEVERS  
 "SH" R/A TYPE WITH SHORT LEVERS  
 "SA" STRAIGHT TYPE W/O LEVERS  
 "SB" R/A TYPE W/O LOVERS  
 "SD" SHORT LEVER ONLY

#### 2. NO. OF CONTACTS:

010, 012, 014, 016, 020, 024, 026, 030,  
 034, 040, 044, 050, 060, 064  
 001 (FOR LEVER ONLY)

#### 3. CONTACT FINISH:

"G" FULL GOLD PLATED  
 "S" SELECTIVE GOLD PLATED  
 "T" FULL TIN PLATED  
 "L" LEVER

#### 4. HOUSING COLOR:

"B" BLACK (STANDARD)  
 "A" GRAY (OPTIONAL)